



SoCal Greenprint

Natural and Working Lands Working Group

The Nature Conservancy and Southern California Association of Governments

May 27, 2021

www.scag.ca.gov

in collaboration with



Multi-benefit Asset Mapping



- What is Multi-benefit Asset Mapping?
- Why is it useful?
- How do we implement this in the SoCal Greenprint?

Multi-benefit Asset Mapping

A wall-to-wall **characterization** of the overlap of resources



Agriculture and Working Lands



Habitat and Biodiversity



Environmental Justice, Equity, and Inclusion



Built environment

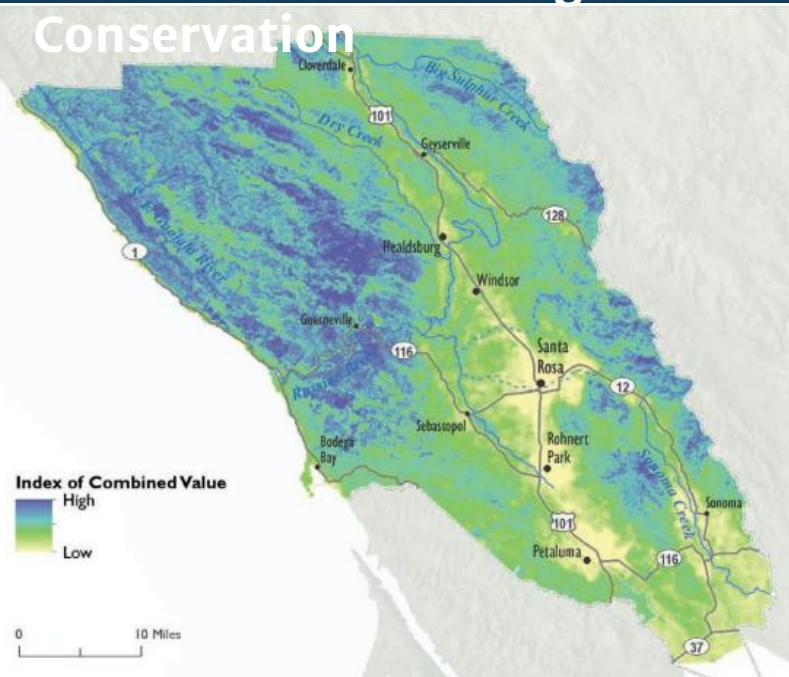


Climate Vulnerabilities and Resilience

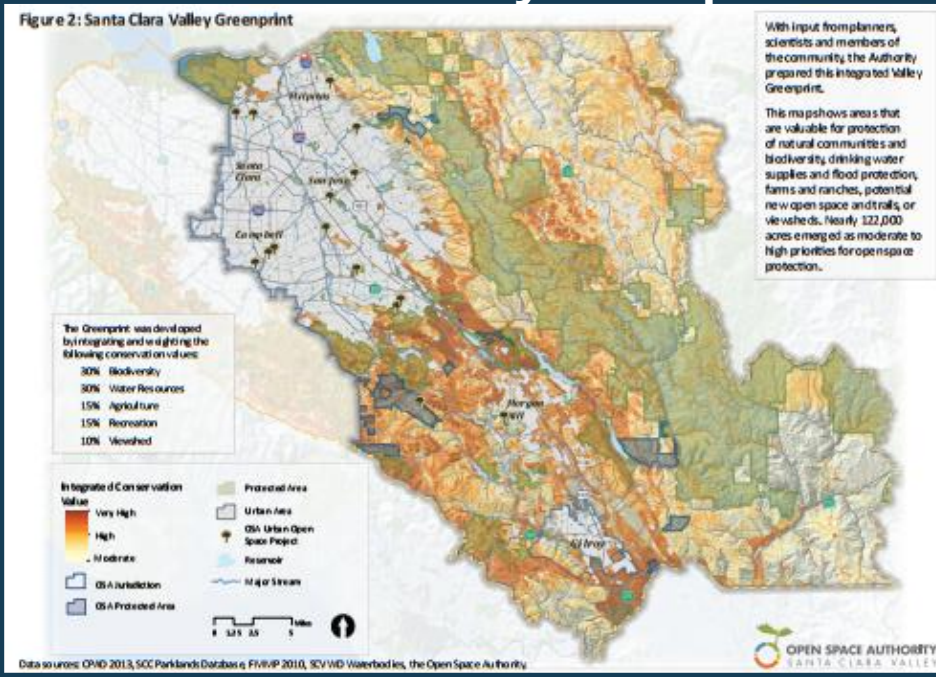


Water Resources

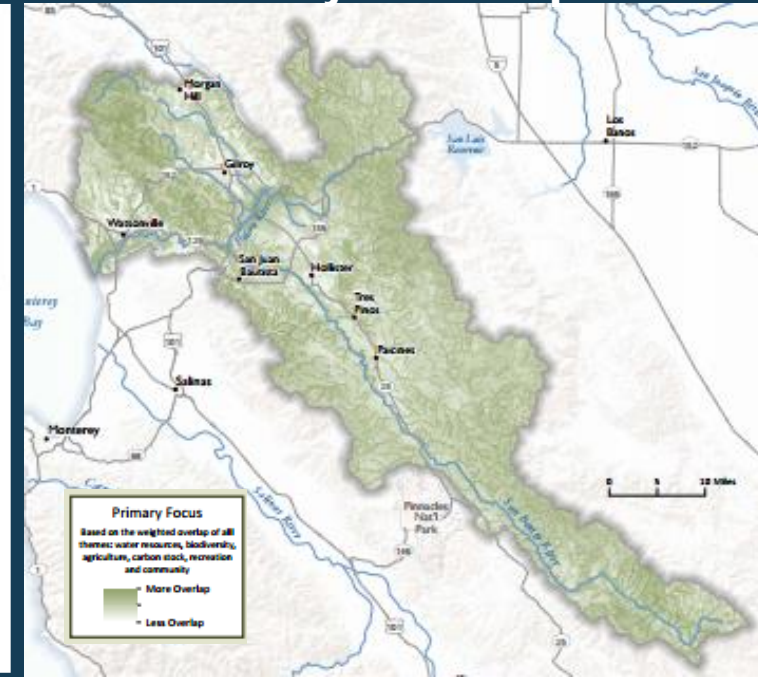
Climate Action Through Conservation



Santa Clara Valley Greenprint



Pajaro Compass



Multi-benefit Asset Mapping

Six thematic asset mapping indices by theme, supported by multiple datasets



Agriculture and Working Lands



Habitat and Biodiversity



Environmental Justice, Equity, and Inclusion



Built environment

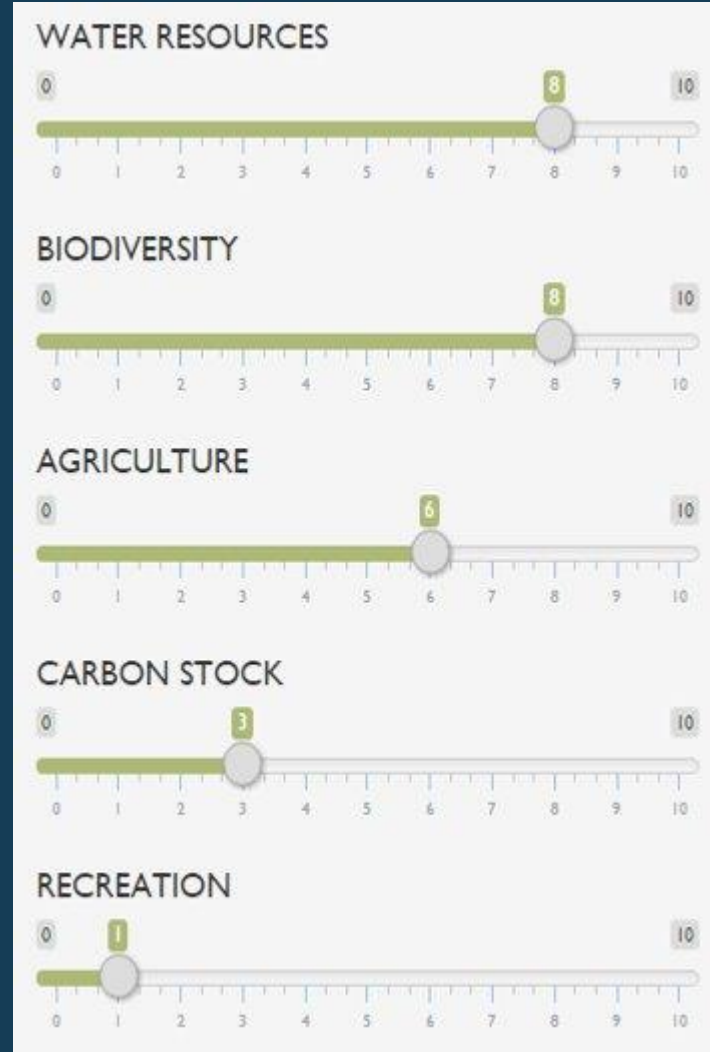


Climate Vulnerabilities and Resilience



Water Resources

Highlight the multiple benefits of each theme



Enables multiple users to use their unique perspective



What are the benefits of multi-benefit asset mapping?



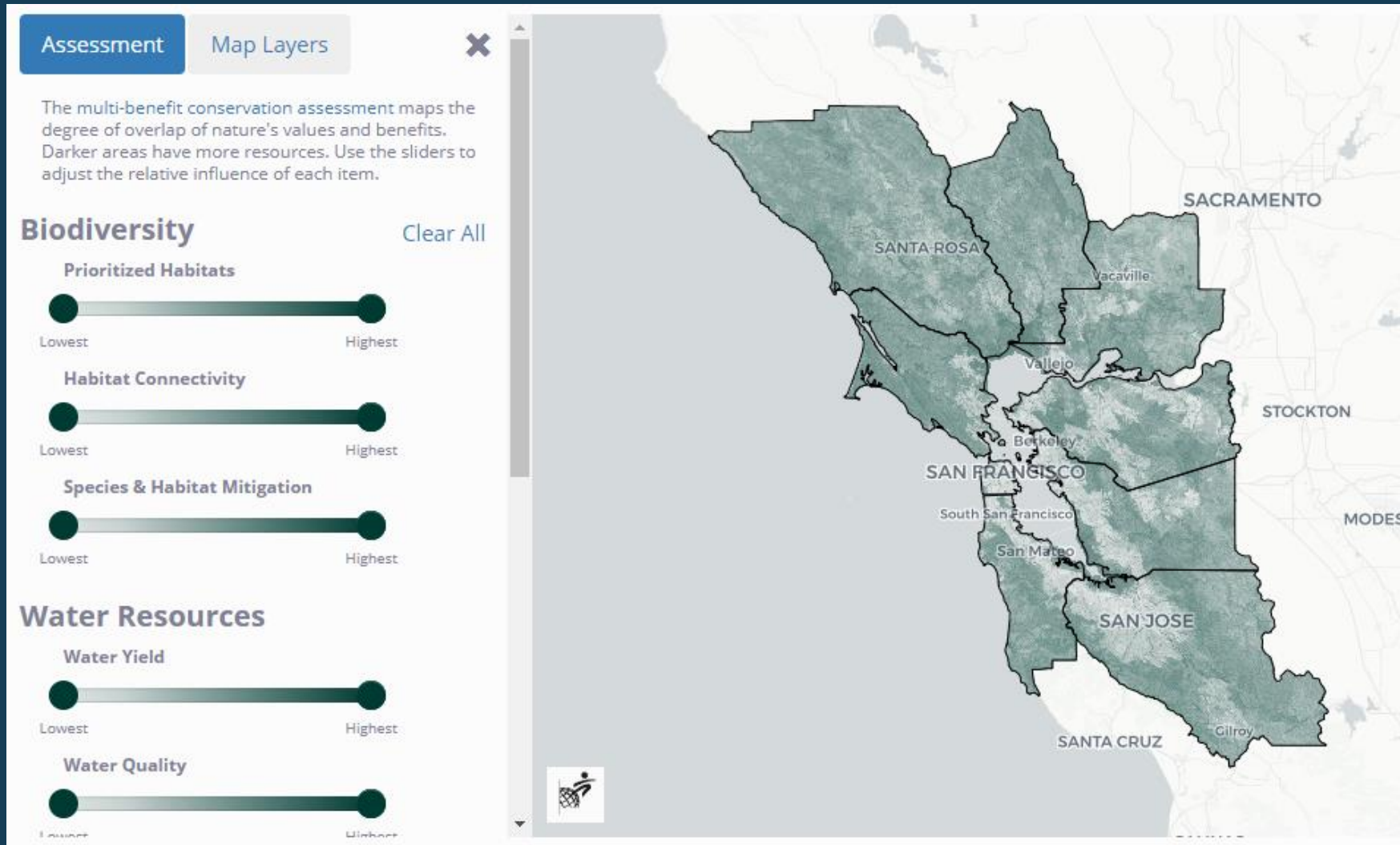
Highlights areas of high or low resource overlap

- No surprise reporting
- Areas where protection may benefit multiple resources
- Areas where development may have less conflict

Increases knowledge and awareness

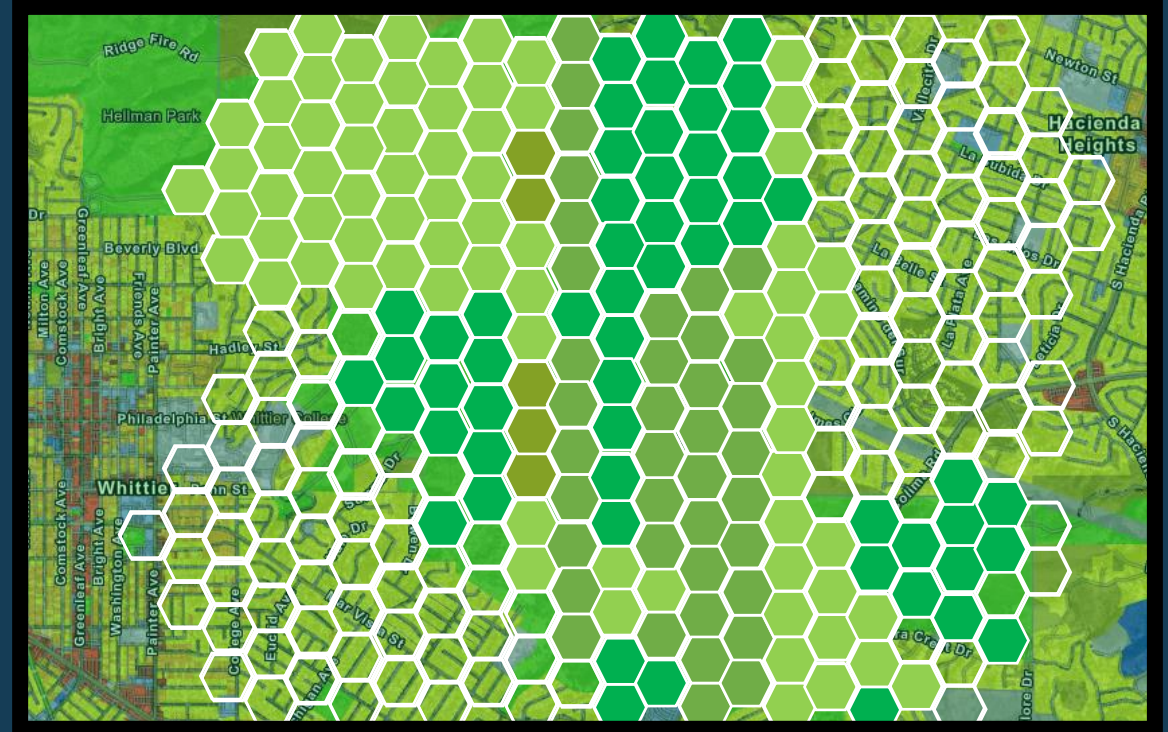
- Facilitate cross-sector partnerships and coalitions
- Increase advocates for projects
- Help to identify alternate funding sources

Bay Area Greenprint Demonstration



Consolidation & Aggregation of Local, State, and Federal Data

- Data elements are aggregated to a regional fishnet grid cell with geographic coverage for the entire SCAG Region
- If underlying dataset intersects with fishnet, data is transferred and summarized at fishnet grid level
- When developing multi-benefit asset layers based on the six themes, grid cells intersecting with more underlying data elements will appear darker
- There is no rescaling, weighting of underlying data elements, or alteration of native data sources (as developed by local, state, and federal data authors)
- Fishnet Grid Scale = **30 Meters x 30 Meters**



Curating existing data

Asset maps will be:

- Curated, existing, publicly available datasets
- User-driven
- Adjustable by transparency between sub-themes
- Clear about which datasets are used

Asset maps will not:

- Not be available for download as a static map
- Not be weighted or scored
- Not combine data measured in different units
- Will not be used in the Greenprint report for an area-of-interest